

ROAD INDEX

A	I	ROCK CREEK RD.	A1
J	JGANN DRIVE	G-3	
B	BURROWS RD.	B1-F1	KILE ROAD A2-A6
SUN ROAD	D5		
C	CLAY STREET	B1-C6	LEGGETT RD. B1-F2
T			
D	DEWEY ROAD	C1	MADISON RD. D1-D6
U			
		MORGAN RD.	F1-F3
		MURPHY RD.	F1
E			
F			
G			
H			
I			
J			
K			
L			
M			
N			
O			
P			
Q			
R			
S			
T			
U			
V			
W			
X			
Y			
Z			

- ① LEDGEMONT SCHOOL
- ② COMMUNITY CHURCH
- ③ MONTVILLE METHODIST CHURCH
- ④ MONTVILLE CEMETERY
- ⑤ MONTVILLE VOL. FIRE DEPT.
- ⑥ UNITED STATES POST OFFICE
- ⑦ MONTVILLE TOWN HALL
- ⑧ STATE HIGHWAY GARAGE (SUB STATION)
- ⑨ MONTVILLE COMMUNITY CENTER

MONTVILLE TOWNSHIP

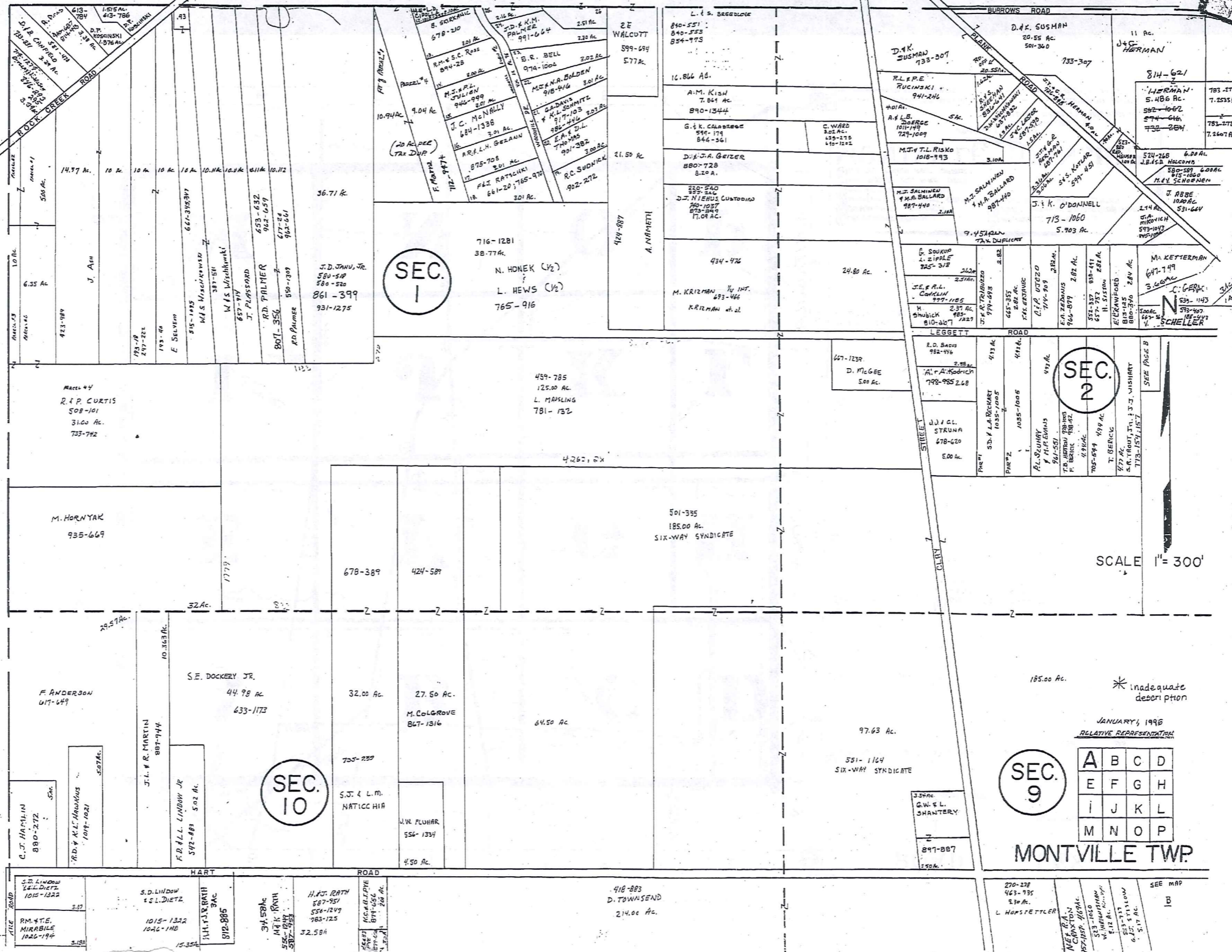
SCALE: 1" = 2000'
 ROBERT L. PHILLIPS,
 GEauga COUNTY ENGINEER

- UNPAVED ROADS
- PAVED ROADS
- TOWNSHIP LINE
- COUNTY LINE



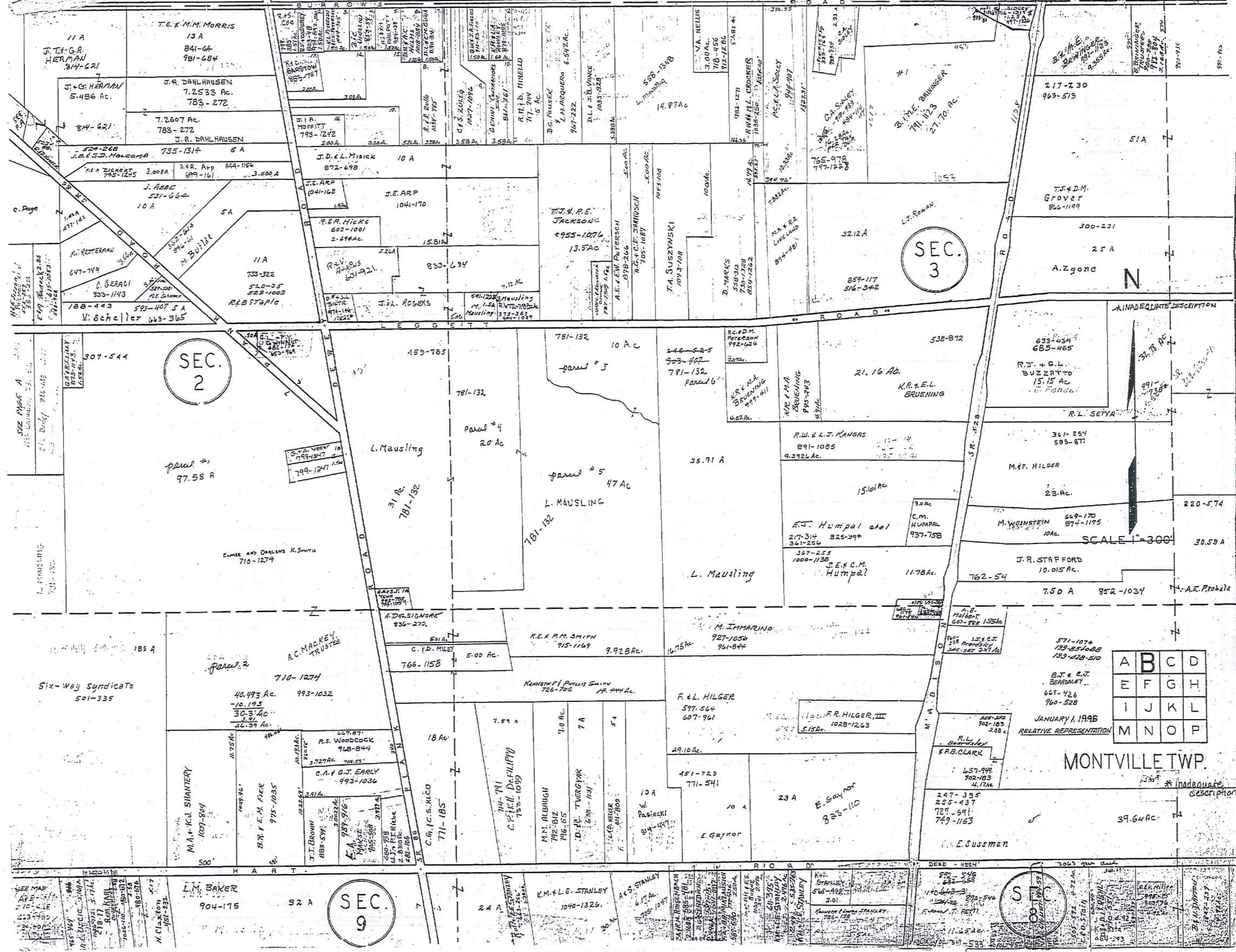
T H O M P S O N T O W N S H I P

H A M B D E N T O W N S H I P



TRM-BE01
 1-800-345-7334
 SCALE IN VIEW OF ANCHOR

T H O M P S O N T O W N S H I P



339

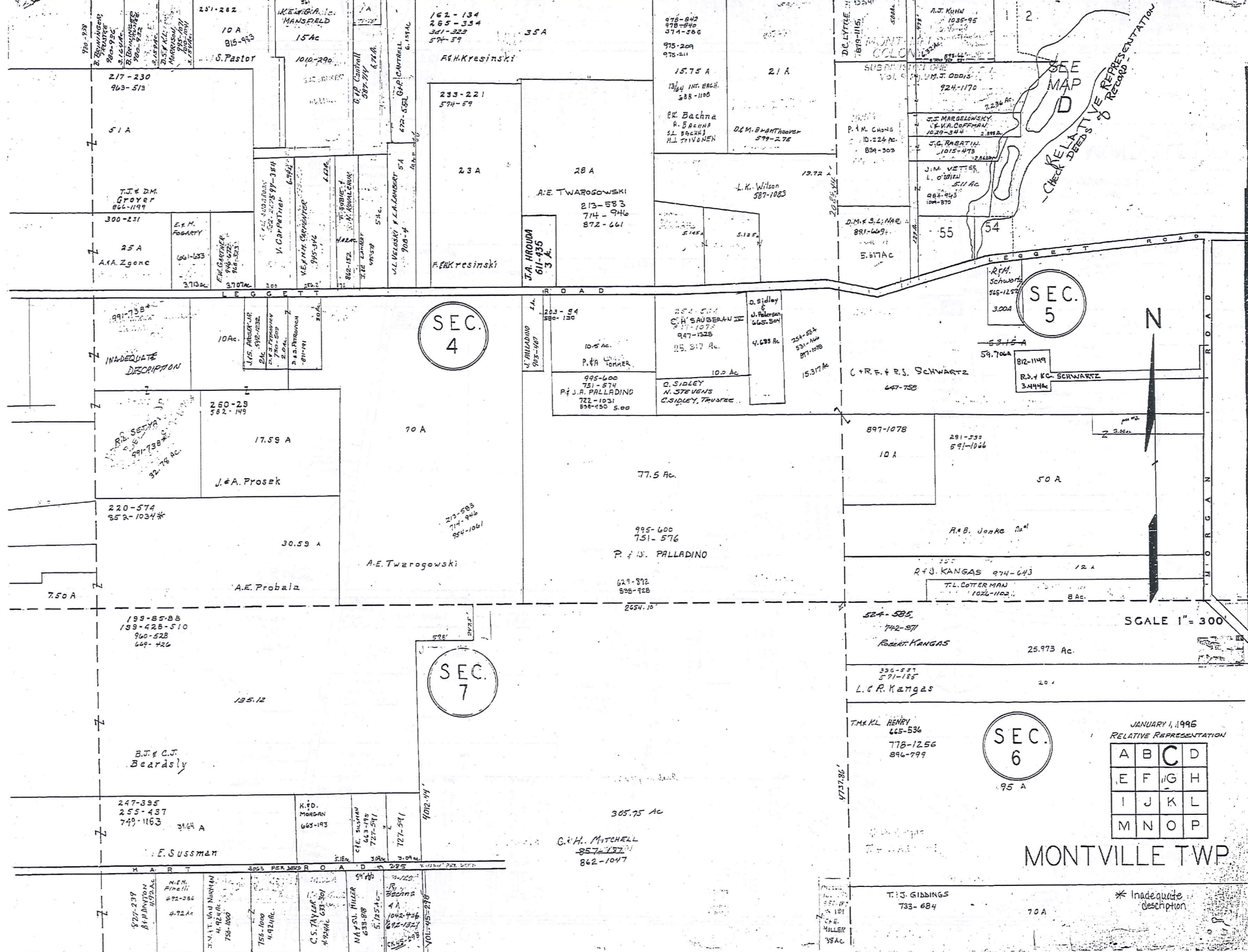
TRW-REDI
1-800-345-7334
SCALE IN 1000 OF AN INCH

A	B	C	D
E	F	G	H
I	J	K	L
M	N	O	P

MONTVILLE TWP.

RELATIVE REPRESENTATION
JANUARY 1, 1998

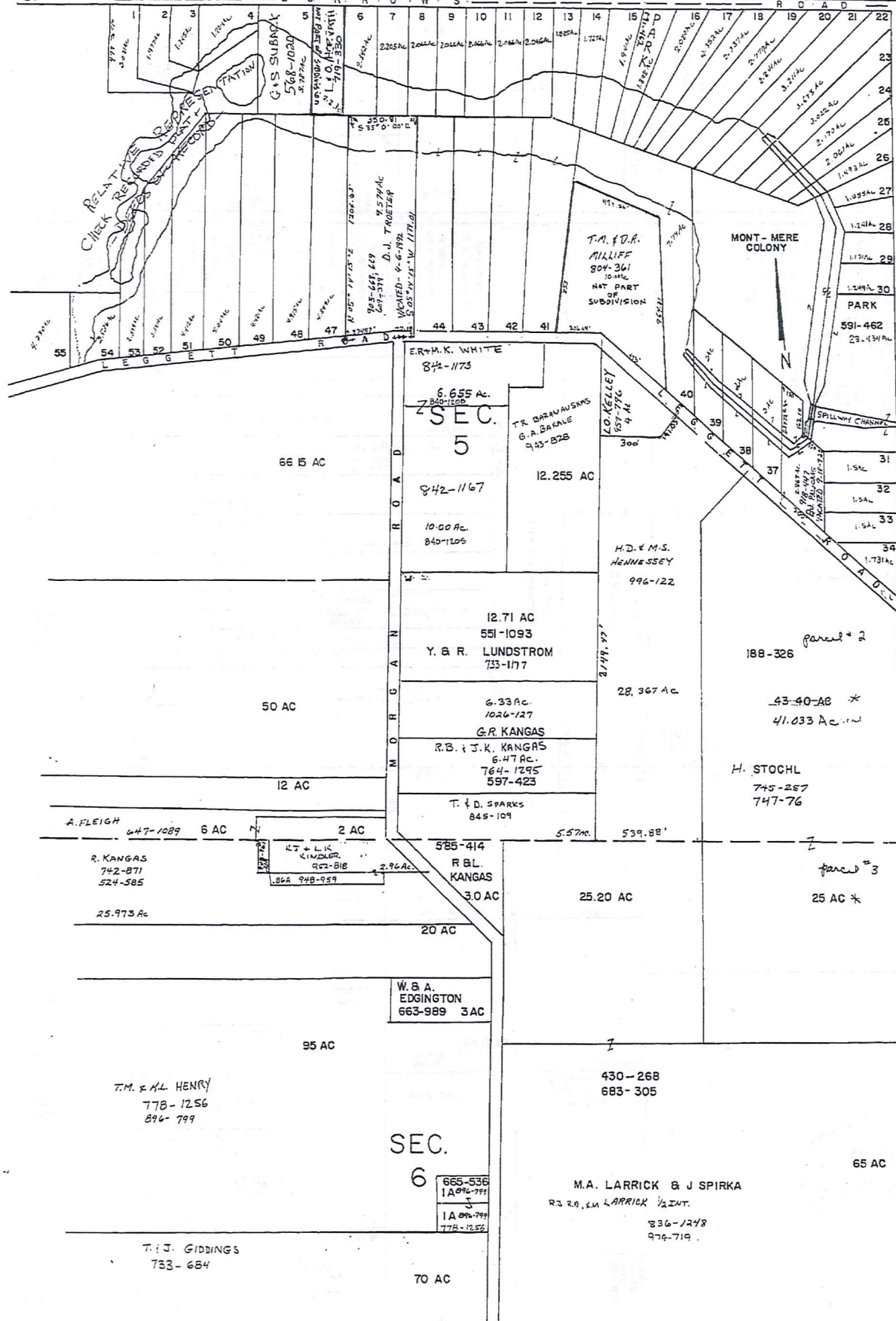
THOMPSON TOWNSHIP



TRW-REDI
1-800-345-7334
SCALE 1" = 300' ANCHOR

340

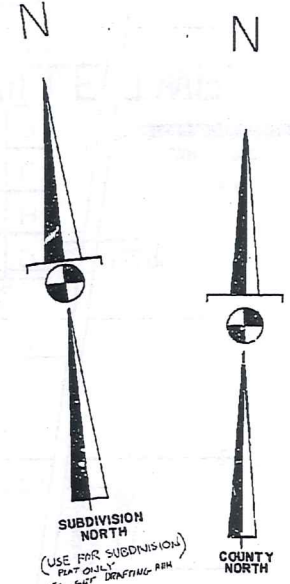
T H O M P S O N T O W N S H I P



MONT-MERE COLONY

1	M.G. SHANK	1008-530
2	ST. C. MICHAELS	837-492
3	M.B. BURTON	158-297
4	J.F. MONDA	248-1020
5	T.P. J.A. HART	1080-60
6	R.S. HANIK	700-175
7	Z.F. HOWARD	762-156
8	J.J. B. DOGHERTY	763-633
9	L.L. E. MINICK	947-357
10	J.S. CHAMBERLAIN	574-266
11	C. LIPMAN THORPE	475-300
12	S.C. LIND	172-1041
13	D.F. B. UMSEL	848-24
14	C. KERMODE	807-378
15	J. CLAYTON	532-819
16	J.F. McDougALL	789-1288
17	W.R. D.M. HART	841-245
18	H.B. UMSEL	581-1059
19	J.M. FERGUSON	821-489
20	G.L.S. GEORGE	830-47
21	S.S. K.E. BRIDGEMAN	188-188
22	R.S. AMMON	471-1117
23	W.W. FARMAN	723-824
24	R.D. & M. REUS	953-60
25	T. S. DOWD	1047-1170
26	T. D. DEWINGER	569-334
27	G. MORSE	133-1037
28	J.L. ANKOWD	655-1058
29	J.A. & C. TERSIGNI	859-1089
30	M. & M. MOVED	152-224
31	D. KINGSLAND	678-611
32	J.P. SCHUBERT	851-1114
33	W. S. CA. WIFE	812-112
34	R. HUNTER & Co.	878-788
35	E.E. BALDWIN	567-369
36	E.E. BALDWIN	642-249
37	E.W. & M. HUGGARD	962-123
38	J.F. Kneveland	873-877
39	C.G. GORHAM	556-918
40	L.F. BIKEL	120-1238
41	S. FERRELLI & SINGE	767-210
42	D.E. FERRELLI	178-1207
43	R. M. KING	774-1342
44	D.E. FERRELLI	507-746
45	O. TROSTER	1047-777
46	" " "	" " "
47	" " "	" " "
48	" " "	" " "
49	" " "	" " "
50	" " "	" " "
51	" " "	" " "
52	" " "	" " "
53	" " "	" " "
54	" " "	" " "
55	" " "	" " "
56	" " "	" " "
57	" " "	" " "
58	" " "	" " "
59	" " "	" " "
60	" " "	" " "
61	" " "	" " "
62	" " "	" " "
63	" " "	" " "
64	" " "	" " "
65	" " "	" " "
66	" " "	" " "
67	" " "	" " "
68	" " "	" " "
69	" " "	" " "
70	" " "	" " "
71	" " "	" " "
72	" " "	" " "
73	" " "	" " "
74	" " "	" " "
75	" " "	" " "
76	" " "	" " "
77	" " "	" " "
78	" " "	" " "
79	" " "	" " "
80	" " "	" " "
81	" " "	" " "
82	" " "	" " "
83	" " "	" " "
84	" " "	" " "
85	" " "	" " "
86	" " "	" " "
87	" " "	" " "
88	" " "	" " "
89	" " "	" " "
90	" " "	" " "
91	" " "	" " "
92	" " "	" " "
93	" " "	" " "
94	" " "	" " "
95	" " "	" " "
96	" " "	" " "
97	" " "	" " "
98	" " "	" " "
99	" " "	" " "
100	" " "	" " "

341



SCALE: 1" = 300'
JAN. 1, 1996
RELATIVE REPRESENTATION

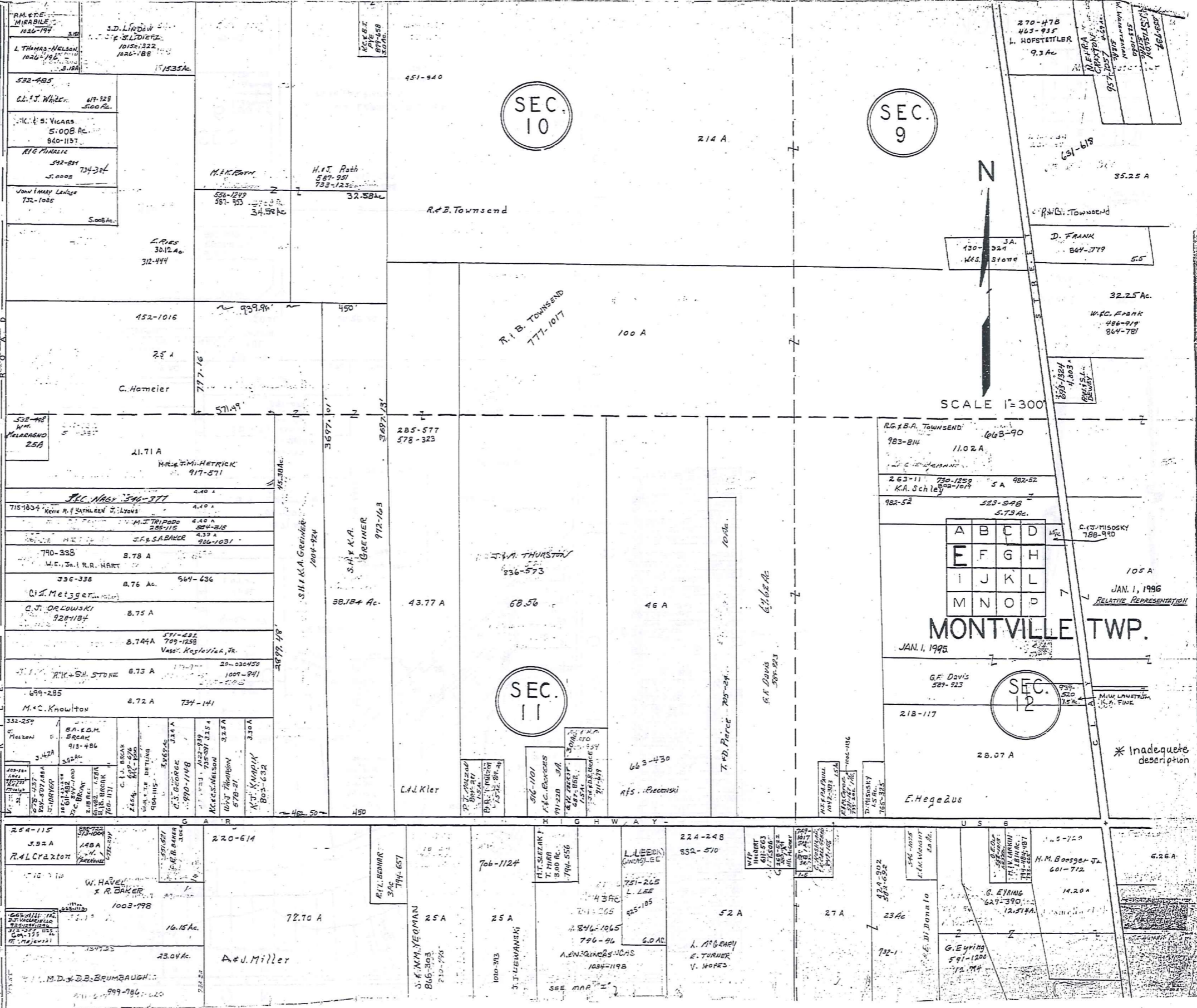
* Inadequate description

A	B	C	D
E	F	G	H
I	J	K	L
M	N	O	P

MONTVILLE TWP.

TRK+REI
1-800-345-7334
SCALE 1/100 OF AN INCH

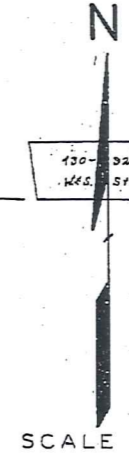
H A M B D E N T O W N S H I P



SEC. 10

SEC. 9

SEC. 11



SCALE 1"=300'

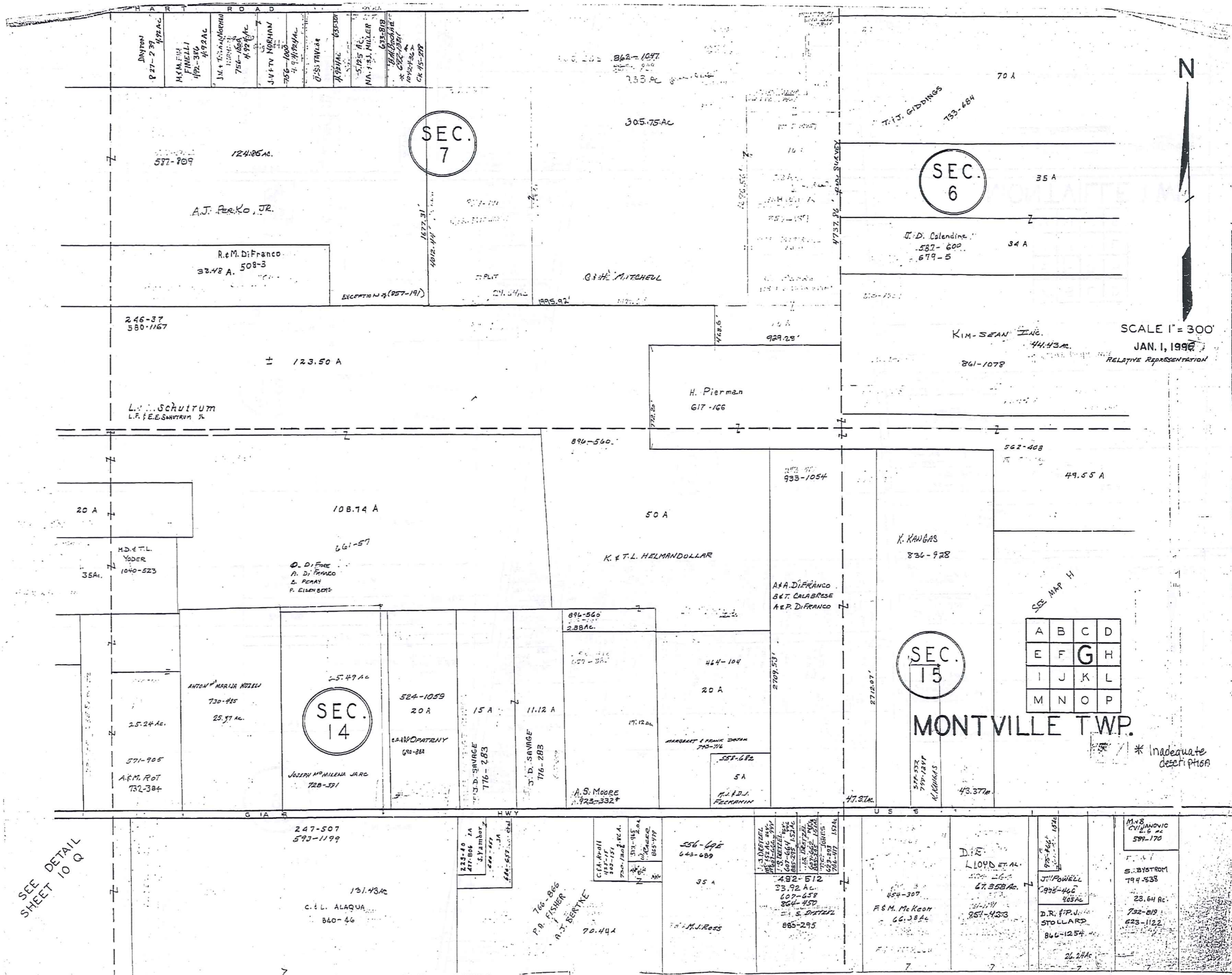
MONTVILLE TWP.
JAN. 1, 1995

SEC. 12

* Inadequate description

TRW-REMI
1-800-345-7334
SCALE IN YDS OF ANCHOR

342



SEC. 7

SEC. 6

SEC. 14

SEC. 15

MONTVILLE TWP.

A	B	C	D
E	F	G	H
I	J	K	L
M	N	O	P

N

SCALE 1" = 300'

JAN. 1, 1996

RELATIVE REPRESENTATION

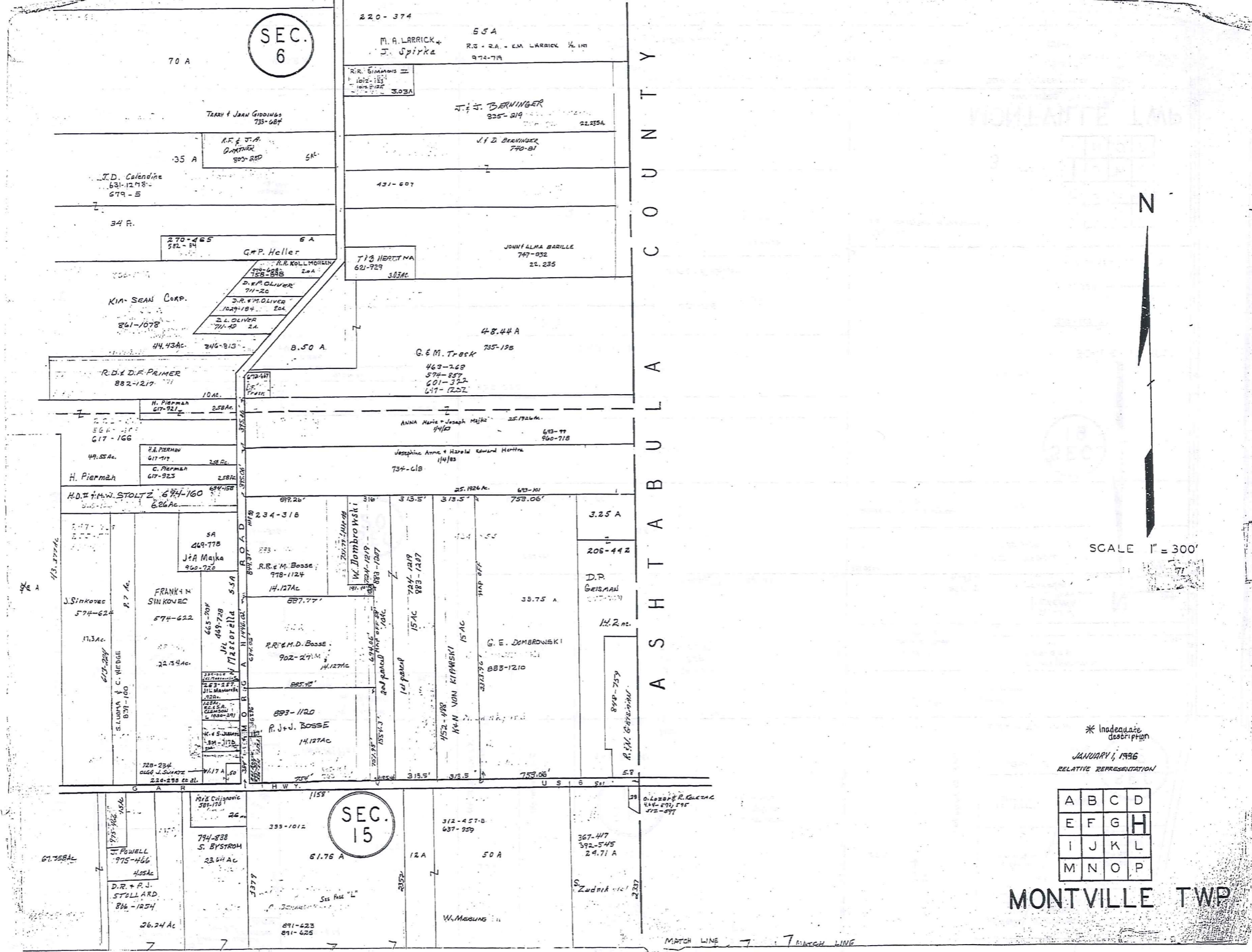
T.M. & H.E.D.
1-800-345-7334

SCALE IN 1/10 OF AN INCH

SEE DETAIL SHEET 10 Q

* Inadequate description

344



A S H T A B B U L A C O U N T Y

N

SCALE 1" = 300'

* Inadequate description
JANUARY 1, 1996
RELATIVE REPRESENTATION

A	B	C	D
E	F	G	H
I	J	K	L
M	N	O	P

MONTVILLE TWP

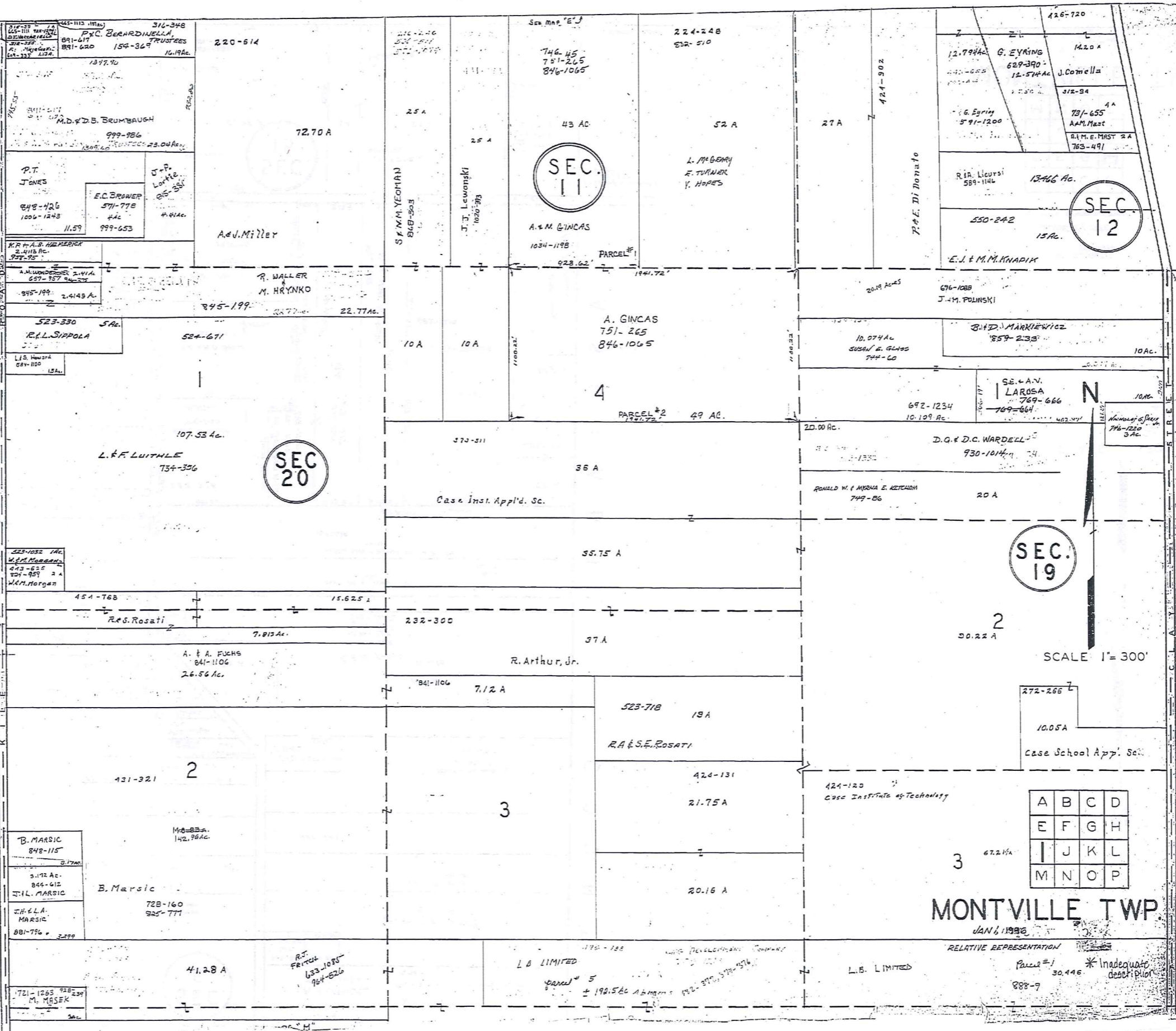
TRM-REMI
1-800-345-7334



SCALE IN 1/160 OF AN INCH

MATCH LINE

H A M B D E N T O W N S H I P



SEC. 11

SEC. 12

SEC. 20

SEC. 19

A	B	C	D
E	F	G	H
I	J	K	L
M	N	O	P

MONTVILLE TWP

JAN 6, 1996

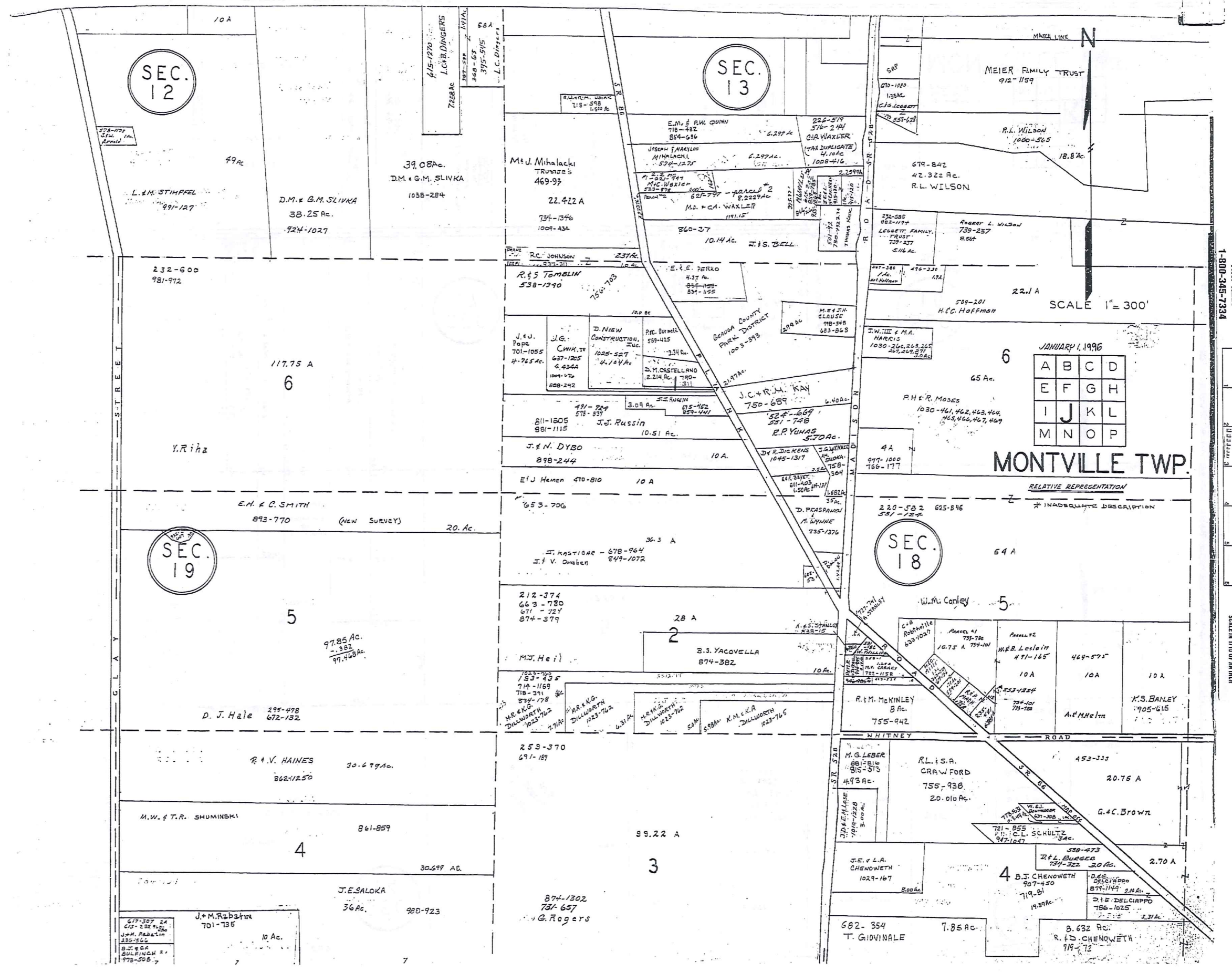
RELATIVE REPRESENTATION

Parcel # 30,446 *Inadequate description 888-9

TWP-REDU
1-800-345-7334

SCALE IN 1/10 OF AN INCH

346



SEC. 12

SEC. 13

SEC. 18

SEC. 19

MONTVILLE TWP.

JANUARY 1, 1996

A	B	C	D
E	F	G	H
I	J	K	L
M	N	O	P

SCALE 1" = 300'

RELATIVE REPRESENTATION
* INADEQUATE DESCRIPTION

1-800-349-7334

SCALE IN 1/16 OF AN INCH

L.M. STIMPEL
991-127

D.M. & G.M. SLIVKA
38.25 Ac.
924-1027

39.08 Ac.
D.M. & G.M. SLIVKA
1038-284

M.J. Mihalacki
TRUSTEE'S
469-97
22.422 A
734-1346
1009-432

E.M. & B.W. QUINN
718-482
854-636

JOSEPH F. MACKAY
MHALACKI
574-1275

M.C. WAXLER
802-797-1000

M.C. WAXLER
1191-15

R.C. JOHNSON
237 Ac.

R.S. TOMBLIN
538-1290

E.E. PERKO
437 Ac.
855-1199
834-159

J.S. BELL
10.14 Ac.

679-842
42.322 Ac.
R.L. WILSON

322-685
882-1194
LEBETT FAMILY
TRUST
739-237
516 Ac.

ROBERT L. WILSON
739-237
8.64

J.W. III & M.A.
HARRIS
1030-265, 268, 269
Ac.

589-201
H.C. HOFFMAN

P.H.R. MOSES
1030-461, 462, 463, 464
465, 466, 467, 469

4A
997-1000
766-177

220-582
581-124

625-846

232-600
981-912

117.75 A
6

Y.R. HAZ

E.H. & C. SMITH
893-770 (New Survey)
20. Ac.

SEC. 19

5

97.85 Ac.
-382
97.468 Ac.

D. J. Hale
295-478
672-132

R. V. HAINES
862-11250
30.679 Ac.

M.W. & T.R. SHUMINSKI
861-859

4

J.E. SALOKA
36 Ac.
980-923

J.M. Rabatin
701-735
10 Ac.

617-507 24
617-231 10
L.M. Rabatin
232-366
B.J. & C.A.
BULFINCH 24
778-508

212-374
663-730
671-724
874-379

M.J. Heil

MR. & MRS.
DILLWORTH
1023-762

MR. & MRS.
DILLWORTH
1023-762

253-370
691-189

R. V. HAINES
862-11250

M.W. & T.R. SHUMINSKI
861-859

J.E. SALOKA
36 Ac.
980-923

J.M. Rabatin
701-735

874-1302
761-657
G. Rogers

874-1302
761-657
G. Rogers

874-1302
761-657
G. Rogers

874-1302
761-657
G. Rogers

874-1302
761-657
G. Rogers

874-1302
761-657
G. Rogers

28 A
2

B.S. YACOVELLA
874-382

MR. & MRS.
DILLWORTH
1023-762

MR. & MRS.
DILLWORTH
1023-762

253-370
691-189

M.W. & T.R. SHUMINSKI
861-859

J.E. SALOKA
36 Ac.
980-923

J.M. Rabatin
701-735

874-1302
761-657
G. Rogers

874-1302
761-657
G. Rogers

874-1302
761-657
G. Rogers

874-1302
761-657
G. Rogers

874-1302
761-657
G. Rogers

874-1302
761-657
G. Rogers

874-1302
761-657
G. Rogers

874-1302
761-657
G. Rogers

874-1302
761-657
G. Rogers

874-1302
761-657
G. Rogers

874-1302
761-657
G. Rogers

874-1302
761-657
G. Rogers

874-1302
761-657
G. Rogers

874-1302
761-657
G. Rogers

874-1302
761-657
G. Rogers

874-1302
761-657
G. Rogers

874-1302
761-657
G. Rogers

874-1302
761-657
G. Rogers

874-1302
761-657
G. Rogers

874-1302
761-657
G. Rogers

874-1302
761-657
G. Rogers

874-1302
761-657
G. Rogers

874-1302
761-657
G. Rogers

874-1302
761-657
G. Rogers

874-1302
761-657
G. Rogers

874-1302
761-657
G. Rogers

874-1302
761-657
G. Rogers

874-1302
761-657
G. Rogers

874-1302
761-657
G. Rogers

874-1302
761-657
G. Rogers

874-1302
761-657
G. Rogers

874-1302
761-657
G. Rogers

874-1302
761-657
G. Rogers

874-1302
761-657
G. Rogers

874-1302
761-657
G. Rogers

874-1302
761-657
G. Rogers

874-1302
761-657
G. Rogers

874-1302
761-657
G. Rogers

874-1302
761-657
G. Rogers

874-1302
761-657
G. Rogers

874-1302
761-657
G. Rogers

874-1302
761-657
G. Rogers

874-1302
761-657
G. Rogers

874-1302
761-657
G. Rogers

874-1302
761-657
G. Rogers

874-1302
761-657
G. Rogers

874-1302
761-657
G. Rogers

874-1302
761-657
G. Rogers

874-1302
761-657
G. Rogers

874-1302
761-657
G. Rogers

874-1302
761-657
G. Rogers

874-1302
761-657
G. Rogers

874-1302
761-657
G. Rogers

874-1302
761-657
G. Rogers

874-1302
761-657
G. Rogers

874-1302
761-657
G. Rogers

874-1302
761-657
G. Rogers

874-1302
761-657
G. Rogers

874-1302
761-657
G. Rogers

874-1302
761-657
G. Rogers

874-1302
761-657
G. Rogers

874-1302
761-657
G. Rogers

874-1302
761-657
G. Rogers

874-1302
761-657
G. Rogers

874-1302
761-657
G. Rogers

874-1302
761-657
G. Rogers

874-1302
761-657
G. Rogers

874-1302
761-657
G. Rogers

874-1302
761-657
G. Rogers

874-1302
761-657
G. Rogers

874-1302
761-657
G. Rogers

874-1302
761-657
G. Rogers

874-1302
761-657
G. Rogers

874-1302
761-657
G. Rogers

874-1302
761-657
G. Rogers

874-1302
761-657
G. Rogers

874-1302
761-657
G. Rogers

874-1302
761-657
G. Rogers

874-1302
761-657
G. Rogers

874-1302
761-657
G. Rogers

874-1302
761-657
G. Rogers

874-1302
761-657
G. Rogers

874-1302
761-657
G. Rogers

874-1302
761-657
G. Rogers

874-1302
761-657
G. Rogers

874-1302
761-657
G. Rogers

874-1302
761-657
G. Rogers

874-1302
761-657
G. Rogers

874-1302
761-657
G. Rogers

874-1302
761-657
G. Rogers

874-1302
761-657
G. Rogers

874-1302
761-657
G. Rogers

874-1302
761-657
G. Rogers

874-1302
761-657
G. Rogers

874-1302
761-657
G. Rogers

874-1302
761-657
G. Rogers

874-1302
761-657
G. Rogers

874-1302
761-657
G. Rogers

874-1302
761-657
G. Rogers

874-1302
761-657
G. Rogers

874-1302
761-657
G. Rogers

874-1302
761-657
G. Rogers

874-1302
761-657
G. Rogers

874-1302
761-657
G. Rogers

874-1302
761-657
G. Rogers

874-1302
761-657
G. Rogers

874-1302
761-657
G. Rogers

874-1302
761-657
G. Rogers

874-1302
761-657
G. Rogers

874-1302
761-657
G. Rogers

874-1302
761-657
G. Rogers

874-1302
761-657
G. Rogers

874-1302
761-657
G. Rogers

874-1302
761-657
G. Rogers

874-1302
761-657
G. Rogers

874-1302
761-657
G. Rogers

874-1302
761-657
G. Rogers

874-1302
761-657
G. Rogers

874-1302
761-657
G. Rogers

874-1302
761-657
G. Rogers

874-1302
761-657
G. Rogers

874-1302
761-657
G. Rogers

874-1302
761-657
G. Rogers

874-1302
761-657
G. Rogers

874-1302
761-657
G. Rogers

874-1302
761-657
G. Rogers

874-1302
761-657
G. Rogers

874-1302
761-657
G. Rogers

874-1302
761-657
G. Rogers

874-1302
761-657
G. Rogers

874-1302
761-657
G. Rogers

874-1302
761-657
G. Rogers

874-1302
761-657
G. Rogers

874-1302
761-657
G. Rogers

874-1302
761-657
G. Rogers

874-1302
761-657
G. Rogers

874-1302
761-657
G. Rogers

874-1302
761-657
G. Rogers

874-1302
761-657
G. Rogers

874-1302
761-657
G. Rogers

874-1302
761-657
G. Rogers

874-1302
761-

SEE
DETAIL SHEET
10 Q

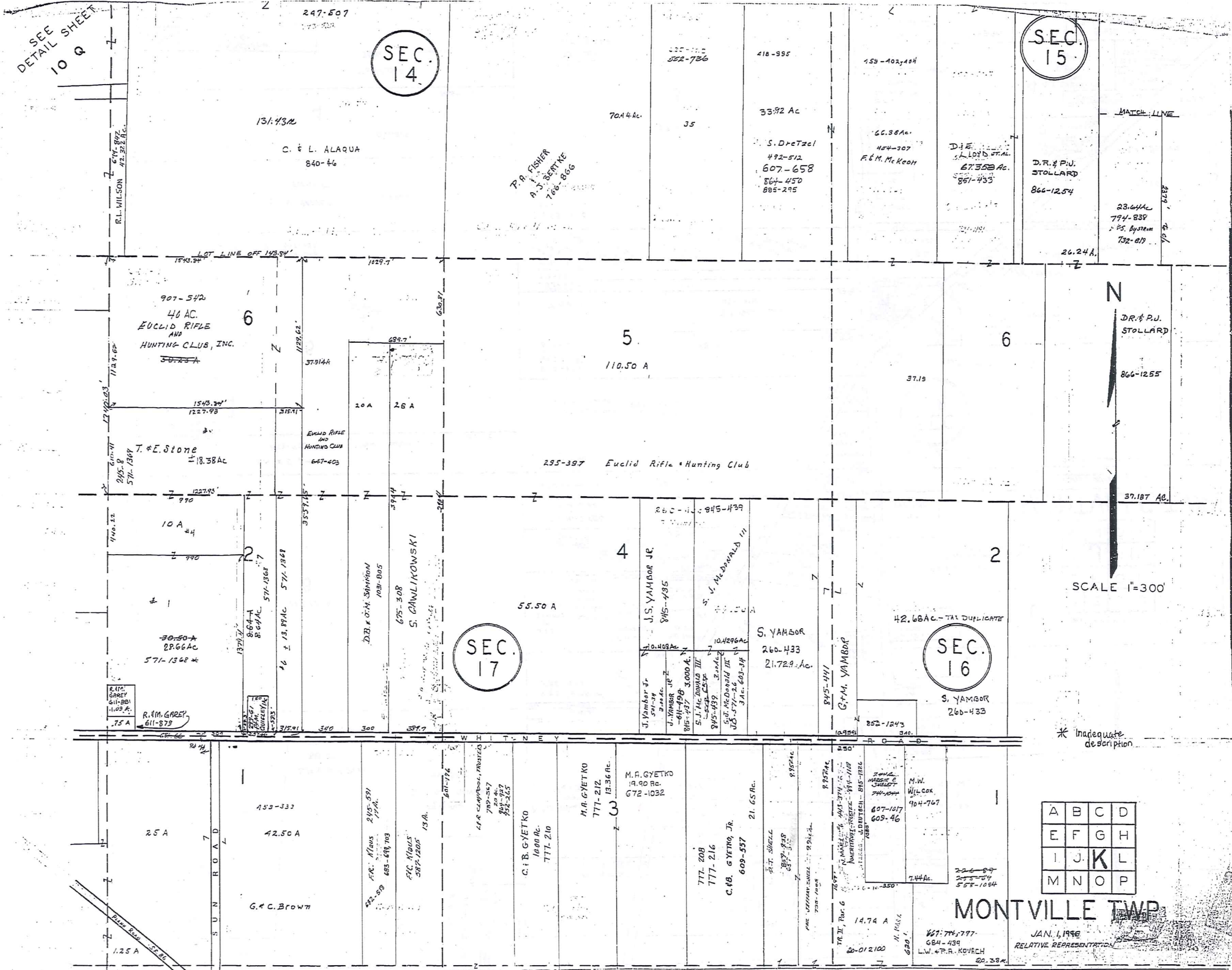
SEC.
14

SEC.
15

SEC.
17

SEC.
16

348



TRW-REMI
1-800-345-7334

SCALE IN 1/10 OF AN INCH

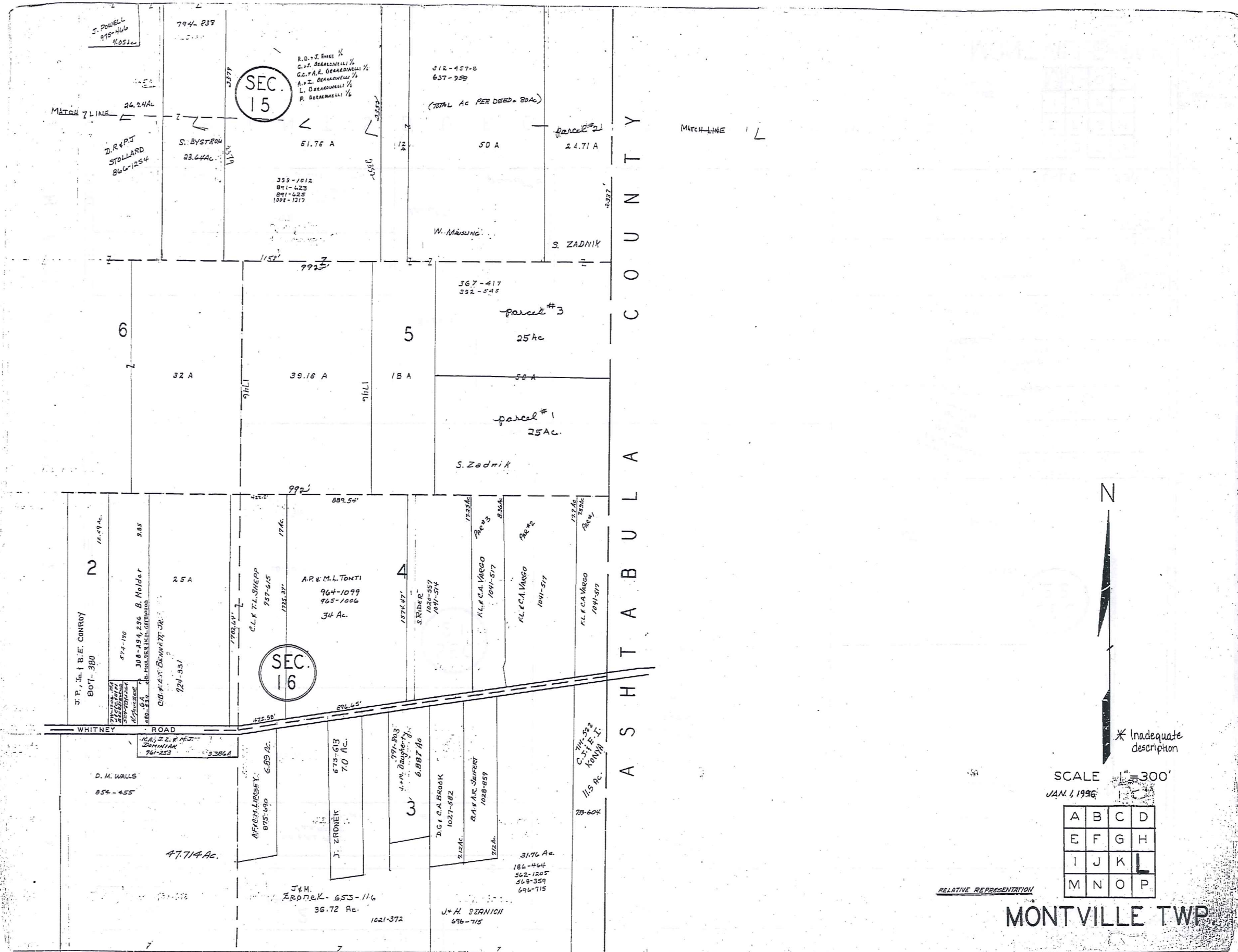
* Inadequate
description

A	B	C	D
E	F	G	H
I	J	K	L
M	N	O	P

MONTVILLE TWP

JAN. 1, 1996
RELATIVE REPRESENTATION

14.74 A
20-01 2100
L.W. & P.R. KOVACH



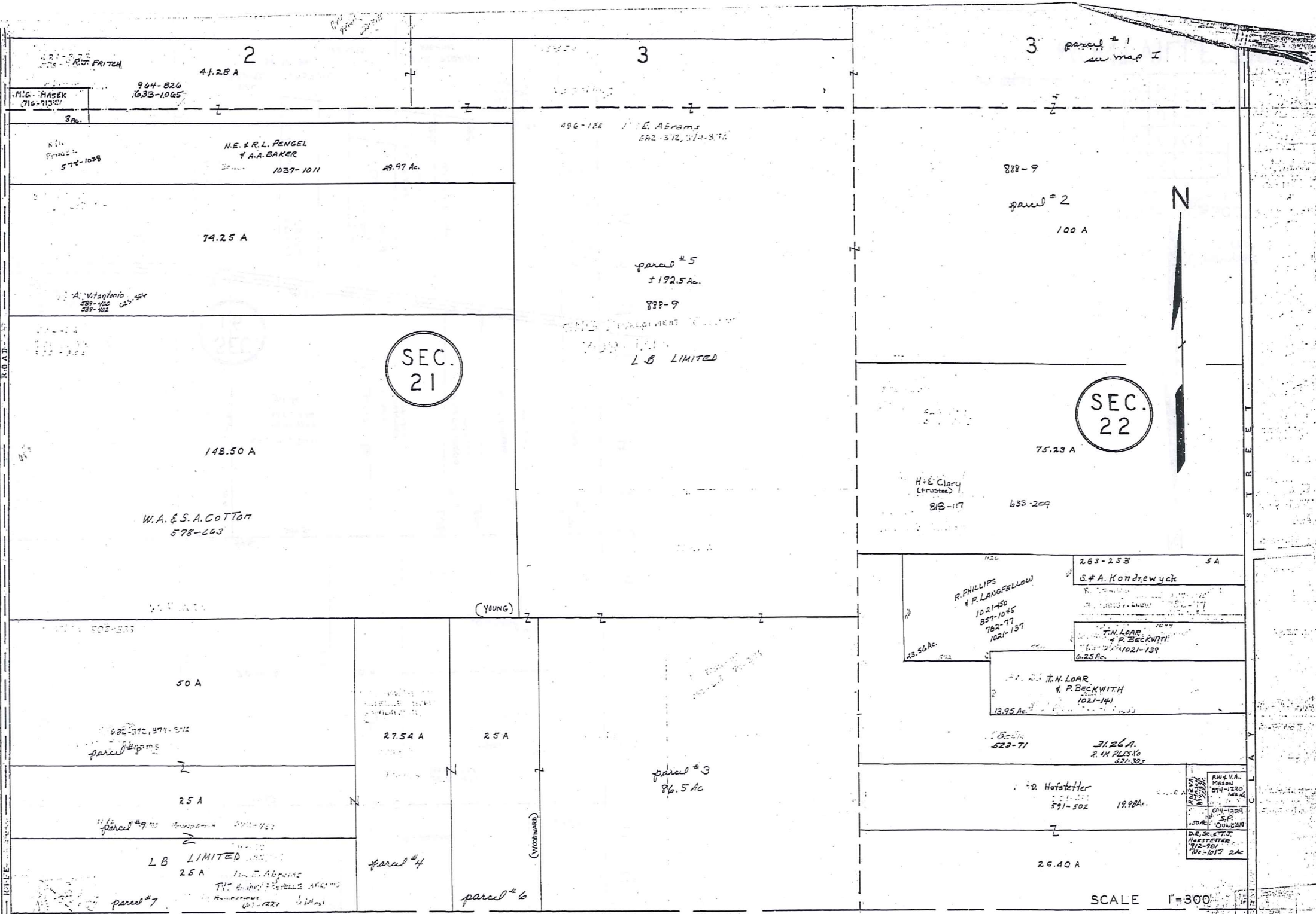
TBM-REID
1-800-345-7334



SCALE IN 1/10 OF AN INCH

MONTVILLE TWP

H A M B D E N T O W N S H I P

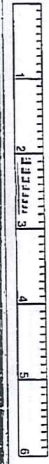


SEC. 21

SEC. 22



TRIM:REDI
1-800-345-7334



SCALE IN 1/100 OF AN INCH

SCALE 1"=300'

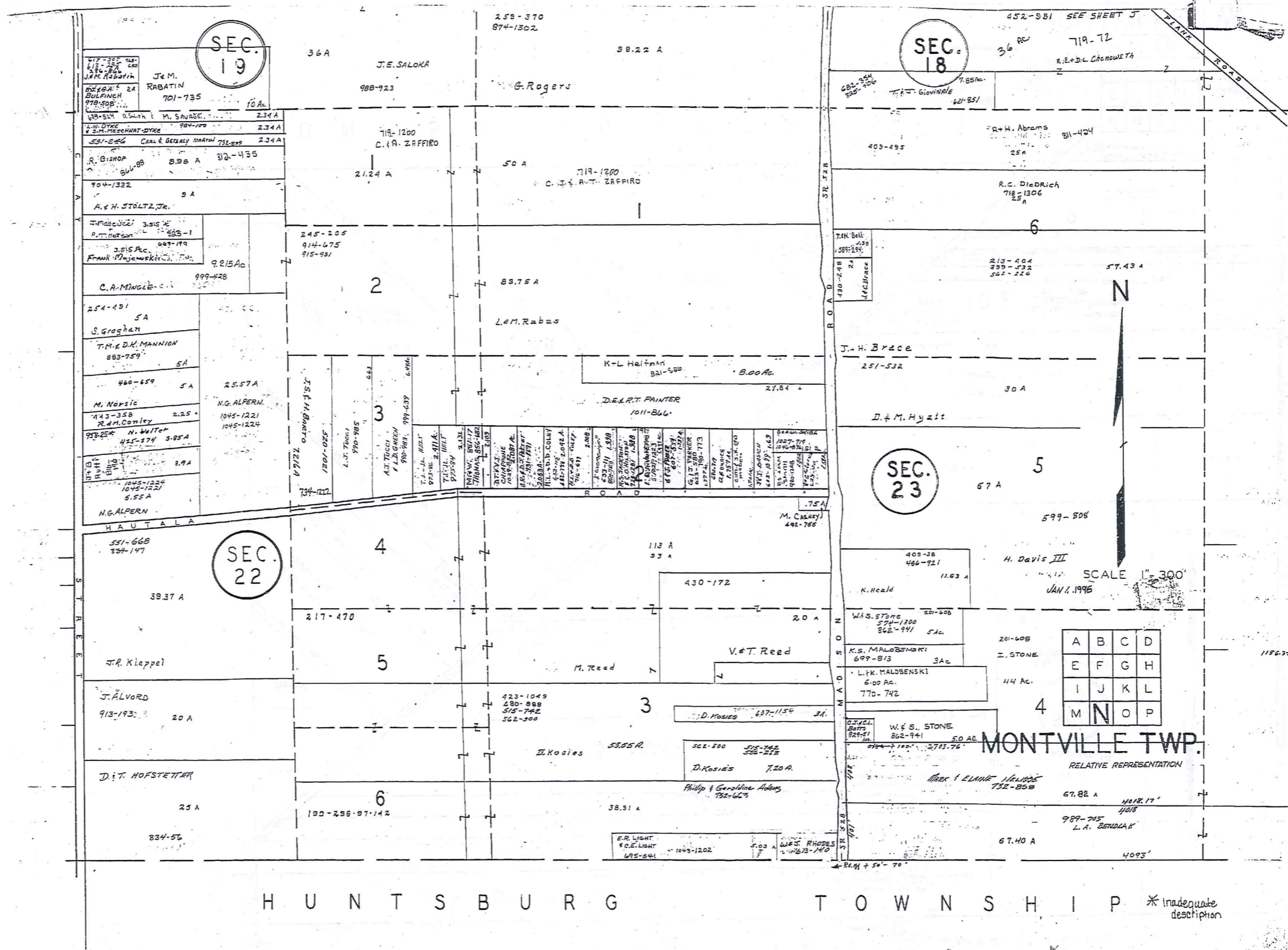
A	B	C	D
E	F	G	H
I	J	K	L
M	N	O	P

* Inadequate description

JAN. 1, 1996
RELATIVE REPRESENTATION.

MONTVILLE TWP

350



SEC. 19

SEC. 18

SEC. 23

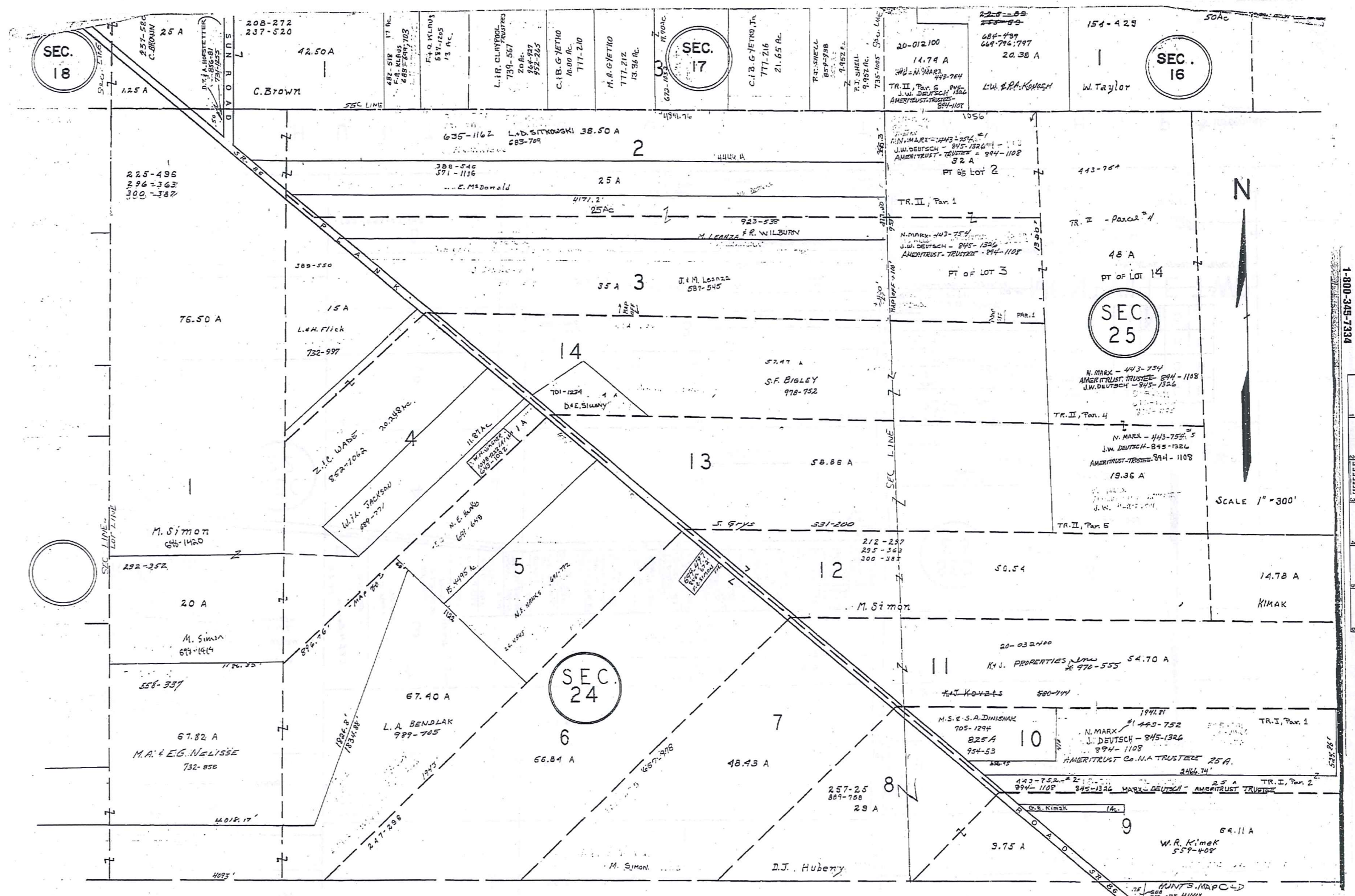
SEC. 22

SCALE 1" = 300'

MONTVILLE TWP.

HUNTTSBURG TOWNSHIP *Inadequate description

TRW-REMI 1-800-345-7334 SCALE IN 1/10 OF AN INCH



HUNTTSBURG TOWNSHIP

JAN 1, 1996
SCALE 1" = 300'

A	B	C	D
E	F	G	H
I	J	K	L
M	N	O	P

* inadequate description

MONTVILLE TWP

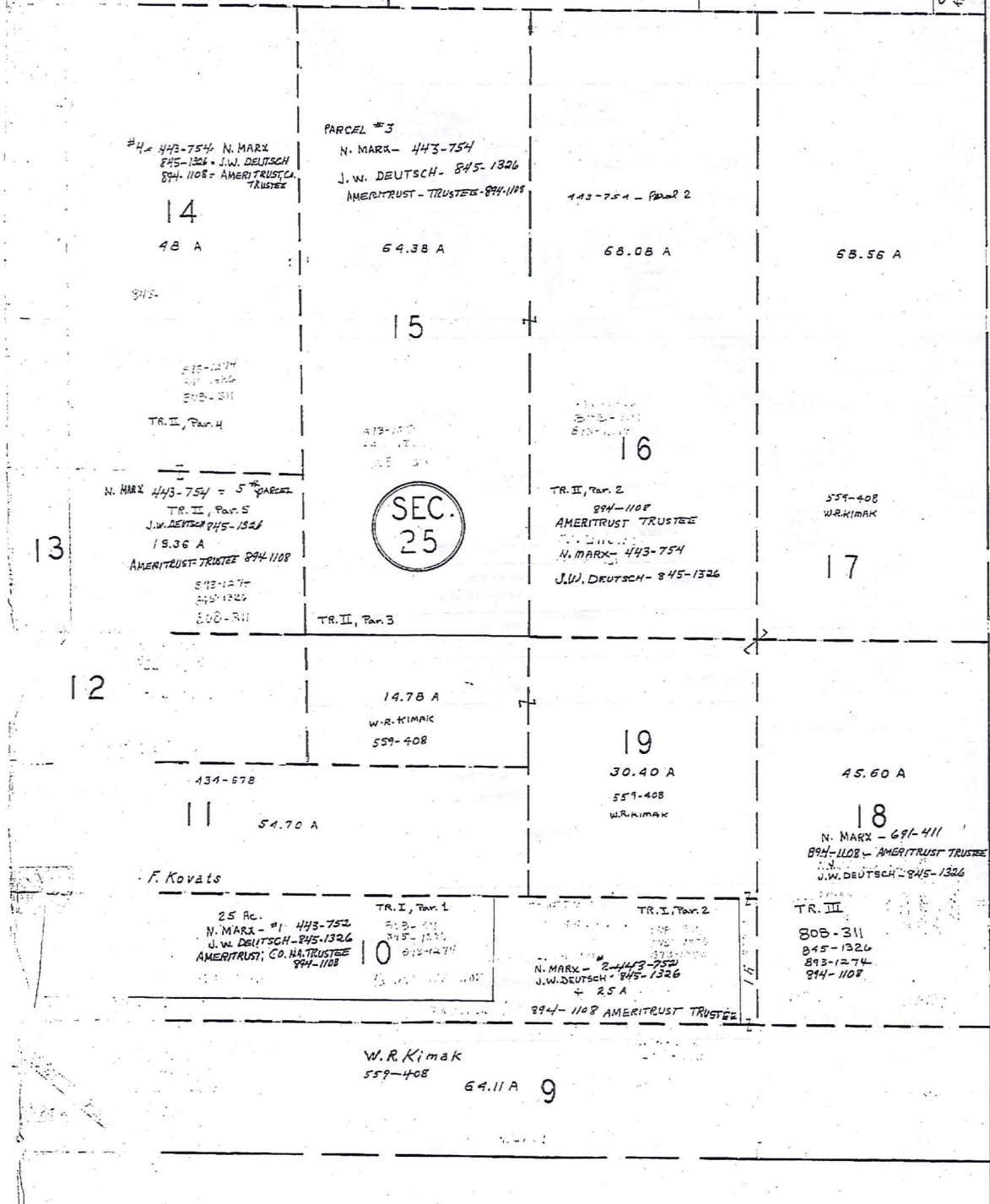
TWP-RED 1-800-345-7334
SCALE IN 1/16 OF AN INCH

SEE PAGE L
854-455
D.M. WALLS

SEE PAGE L
1021-372
430-397
653-116
JY M. ZRONEK
36.72 AC
M.M. Zronek

696-715
46.00 AC
H.J.J. STANICH

133-604
115 AC
TR. 522
KONNYA



A S H T A B U L A C O U N T Y

353



SCALE 1" = 300'

JAN 1, 1996
RELATIVE REPRESENTATION

* Inadequate description

A	B	C	D
E	F	G	H
I	J	K	L
M	N	O	P

MONTVILLE TWP.

TRW-REDI
1-800-345-7334
SCALE IN 1/10 OF AN INCH

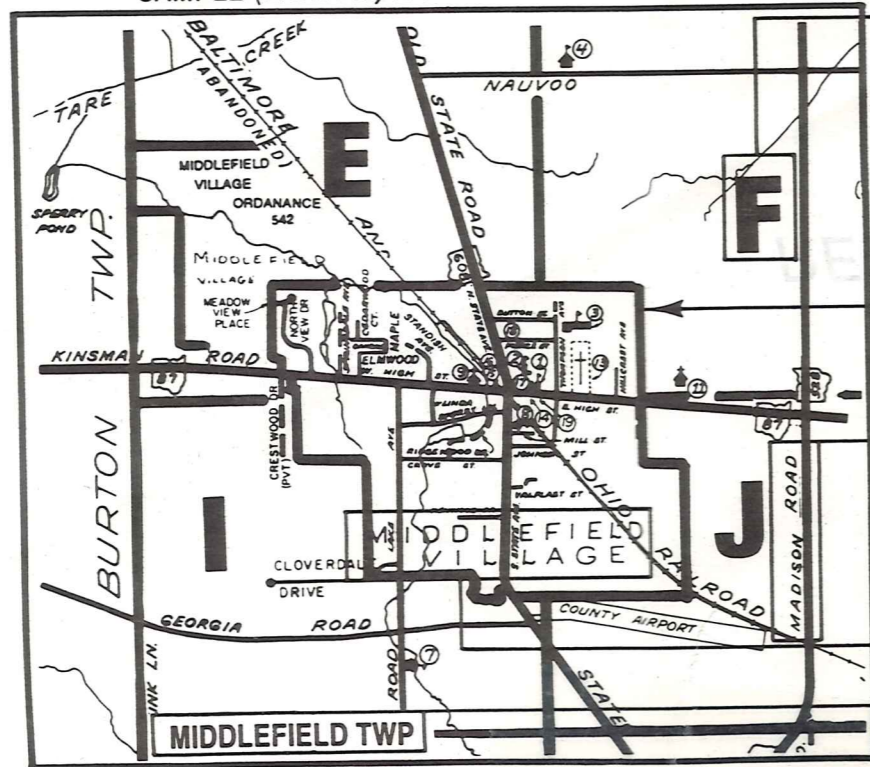
Explanation and Use Sheet for Geauga County, Ohio

A

SAMPLE (PARTIAL) COUNTY INDEX MAP



SAMPLE (PARTIAL) MUNICIPALITY INDEX MAP



SAMPLE (PARTIAL) MAP PAGE



- Tract Lot Number
- Acreage
- Township Name
- Village Boundary
- Street Name
- Village Name
- Township Boundary
- Owners Name
- Denotes Continuous Ownership
- Deed Book & Page
- Map Page Number
- Township Name
- Village Name

- Village Boundary
- Street Name
- Village Name
- Township Name

USE OF THE MAP VOLUME

1. LOCATE THE GENERAL AREA OF INTEREST ON THE COUNTY INDEX MAP AND NOTE THE MUNICIPALITY NAME (TOWNSHIP OR VILLAGE).
 2. REFER TO THE TABLE OF CONTENTS AND NOTE THE BEGINNING ATLAS PAGE NUMBER FOR THE MUNICIPALITY OF INTEREST.
 3. TURN TO THE PAGE INDICATED, ON THIS PAGE WILL APPEAR AN INDEX MAP FOR THAT MUNICIPALITY.
 4. LOCATE THE GENERAL AREA OF INTEREST AND NOTE THE MAP PAGE NUMBER. THIS MAY BE EITHER A LETTER OR A NUMBER.
 5. MAP PAGES ARE IN ALPHABETICAL (OR NUMERICAL) SEQUENCE FOLLOWING THE MUNICIPALITY INDEX MAP. FOLLOW SEQUENCE TO THE MAP PAGE INDICATED.
 6. LOCATE SPECIFIC PARCEL OF INTEREST AND NOTE THE DESIRED INFORMATION.
- NOTE: ON SOME MAPS YOU MAY BE REFERRED TO A DETAIL SHEET SHOWING AN ENLARGEMENT OF THE AREA. THESE MAPS ARE FOUND AT THE END OF THE REGULAR MAP PAGES IN EACH MUNICIPALITY IN EITHER ALPHABETICAL OR NUMERICAL SEQUENCE.
- NOTE: CHARDON VILLAGE HAS TITLE SHEETS. TO LOCATE OWNERS NAME, NOTE THE PARCEL NUMBER, REFER TO THE TITLE PAGE FOLLOWING THE MAP OF INTEREST, FOLLOW NUMERICAL SEQUENCE TO THE PARCEL NUMBER OF INTEREST AND NOTE THE DESIRED INFORMATION. IN ALL OTHER MUNICIPALITIES THE OWNERS NAME APPEARS ON THE MAP PAGE.